

# RFC Editor Report

IETF 107

# Since IETF 106

- Successfully working with v3 XML
  - Published 81 v3 RFCs (95 since transition to v3 XML)
- Welcomed John Levine as the Series Project Manager and said goodbye to Heather Flanagan as the RSE
- Added entry points to HTML RFCs with errata inline
- Ongoing
  - Reporting tooling issues to the developers
  - Determining “correct” practices for v3 XML (e.g., should ‘type’ of <sourcecode> always be set)
  - Adapting workflow and procedures
  - Discussing community feedback on the v3 format with John Levine

# Examples of v3 Features in Use

- superscript: [RFC 8681](#)
- non-ASCII characters in an author's name:
  - in the Latin blocks: [RFC 8655](#)
  - outside the Latin blocks: [RFC 8694](#)
- non-ASCII characters in a contact's name:
  - in the Latin blocks: [RFC 8725](#)
  - outside the Latin blocks: [not yet used]

In general use:

- section-specific links to I-Ds and to other RFCs
- more semantic markup, e.g., sourcecode with type attribute
- fully featured table elements (e.g., using rowspan or colspan)

# SLA – RFC Editor Time (RET) (as of 16 March)

	2018			2019				2020
	Q2	Q3	Q4	Q1	Q2	Q3	Q4	Q1 (so far)
<b>Submissions</b>								
<b>Pages</b>	2017	1308	1419	2051	1402	1966	1413	1599
<b>Docs</b>	59	46	53	64	52	65	49	34
<b>PGTE</b>	1852	1022	1656	2057	1491	2296	1574	1754
<b>Publications</b>								
<b>Pages</b>	967	1417	1314	1404	1757	1113	878	977
<b>Docs</b>	42	57	43	42	67	31	40	55
<b>Docs met SLA</b>	26	11	19	40	49	31	19	
<b>SLA tier</b>	Tier 2*	Tier 1	Tier 1	Tier 2	Tier 2*	Tier 2	Tier 2*	
<b>SLA</b>								

**Tier 1**  
PGTE < 1950  
67% RFCs pub <= 6 wks RET

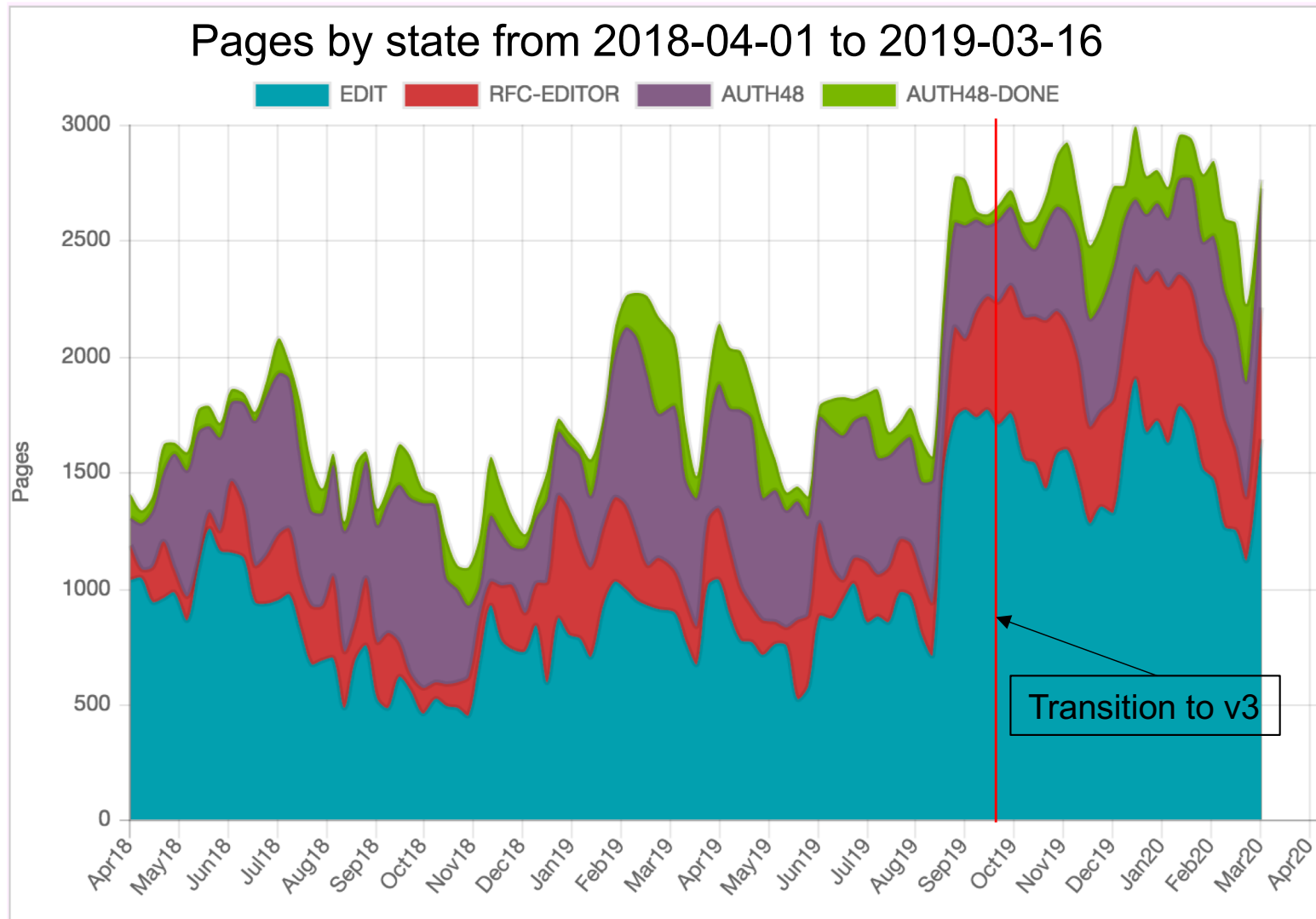
**Tier 2**  
1950 < PGTE < 3072  
50% RFCs pub <= 12 wks RET

**Tier 3**  
3072 < PGTE  
possibly renegotiate expected  
RET

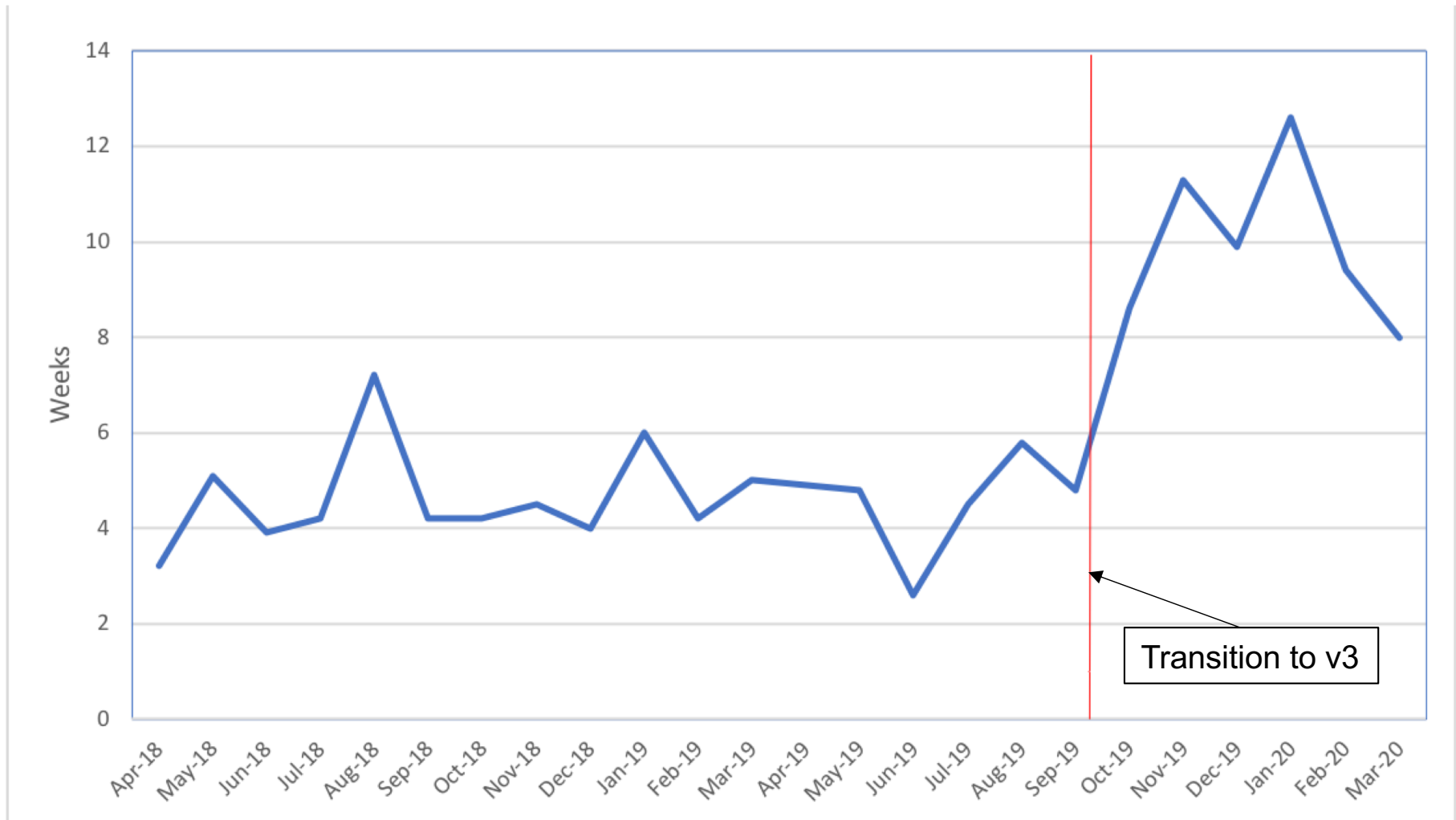
\*\*Note: SLA deferred during  
V3 transition

Tier 2\* indicates when Tier 2 is being applied in the “subsequent quarter” as per the SLA. PGTE is Pages Gone To Edit. Please see <https://www.rfc-editor.org/report-summary> for more details.

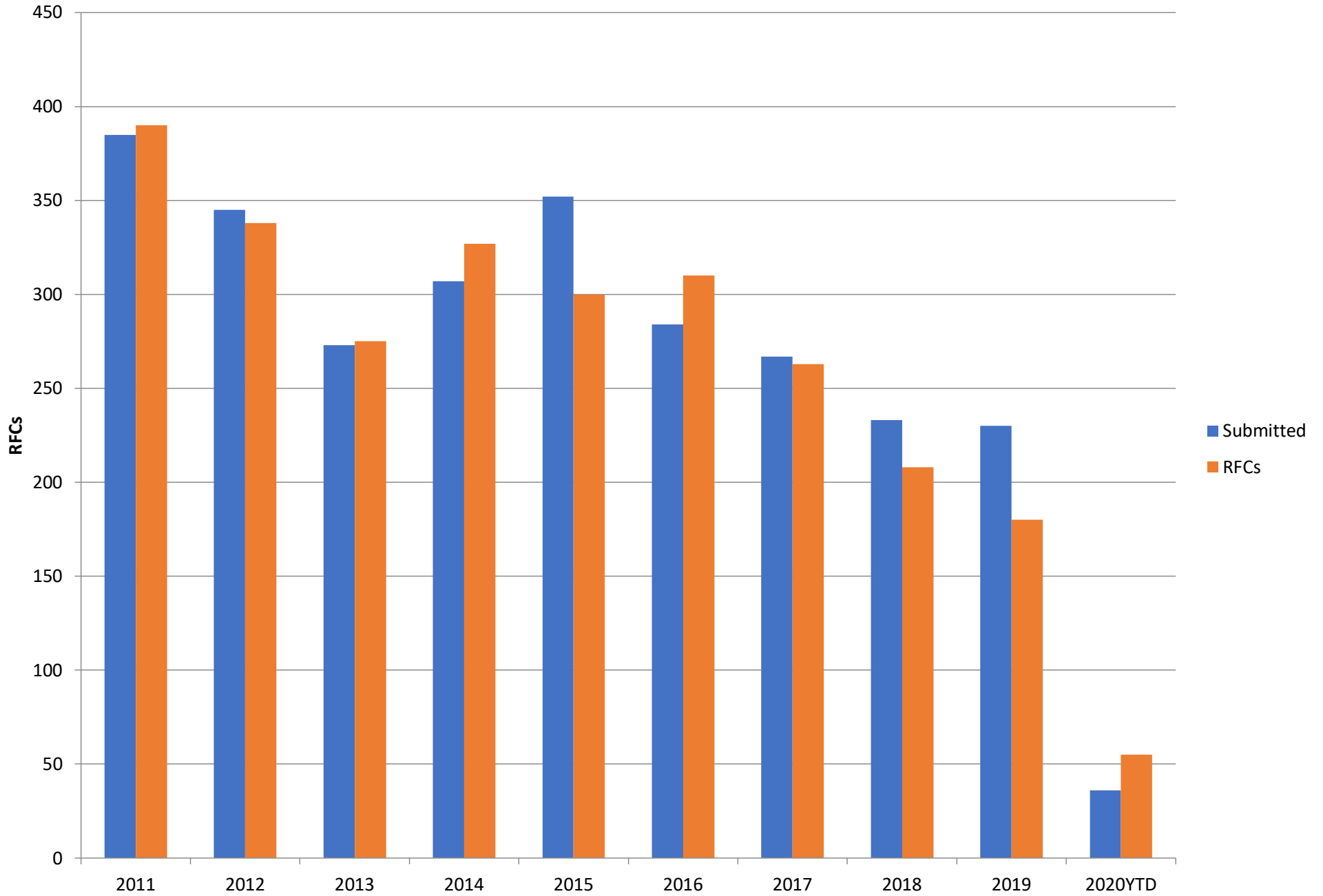
# Primary Processing States



# Average RFC Editor Time (RET)



## RFCs published from 2011 to 2020



# Questions or Comments

- Send us mail [rfc-editor@rfc-editor.org](mailto:rfc-editor@rfc-editor.org)
- See the v3 XML FAQ  
<https://www.rfc-editor.org/materials/FAQ-xml2rfcv3.html>
- Check out [www.rfc-editor.org](http://www.rfc-editor.org) for FAQ, stats, and more